



6/213 Fisher Street Cloverdale WA

2 2 1

"DEVELOPERS OWN" first floor penthouse apartment set in luxury boutique complex boasting size & finish not normally seen in the local area.

Centrally located, it has been finished to a standard, not a price, making this innovative apartment the best value in the Belmont City area. With the Belmont Forum Shopping Centre just one block away and 10 minutes to Perth Airport, Burswood Peninsular, Optus Stadium and the vibrant Perth CBD you will be spoilt for convenience.

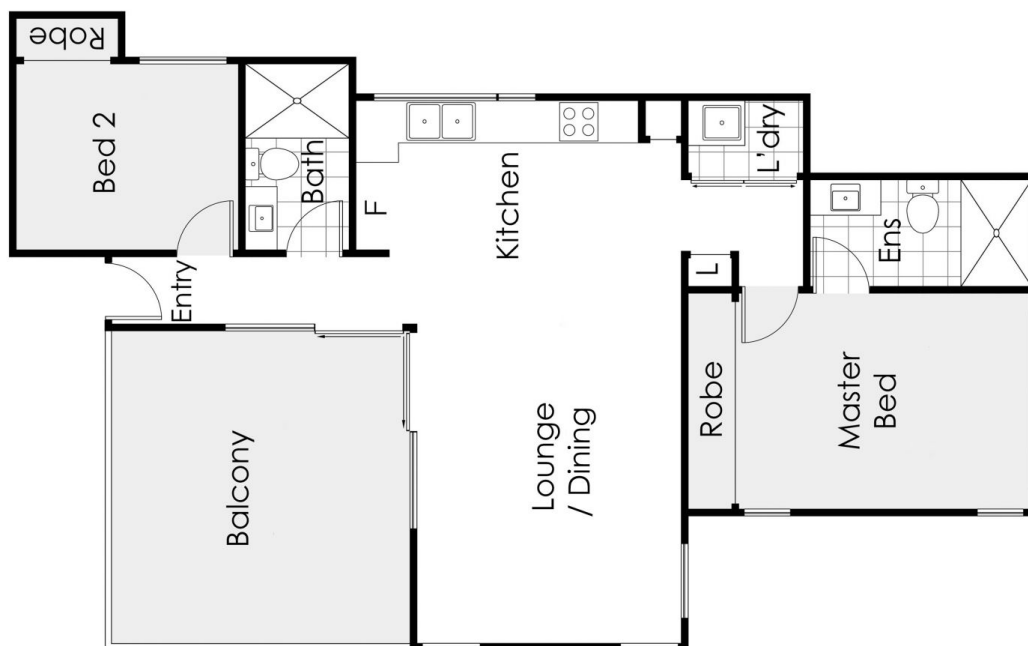
Five-star quality features include full acrylic rendering to the exterior walls, massive 15 sqm private balcony, sliding front security gate, full LED down lighting throughout, reverse cycle split air conditioning plus much, much more.

"CHAMPAGNE" FEATURES INCLUDE

Building Size : 73 sqm
Land Size : 104 sqm
View : <https://www.lauriekelly.com.au/sale/wa/southern-suburbs/cloverdale/residential/unit/8112939>



Devon Kelly
08 9277 4200



6/213 Fisher Street, Cloverdale

This floor plan is not to scale.
 Dimensions are approximate and therefore should only be used for illustrative purposes.

	71 m ²
	2 Bed
	2 Bath
	1 Car