



6 Drysdale Gardens Wandí WA

4 2 2

Nestled in the quiet, family-friendly, and picturesque Drysdale Gardens, you will find this pristinely presented, resort-style, family home ready and waiting for you to call home.

With your choice of amenities just minutes away, including Aubin Grove Shops, Harvest Lakes Shopping Centre, Cockburn Gateway, Wandí Nature Reserve and Honeywood Primary School.

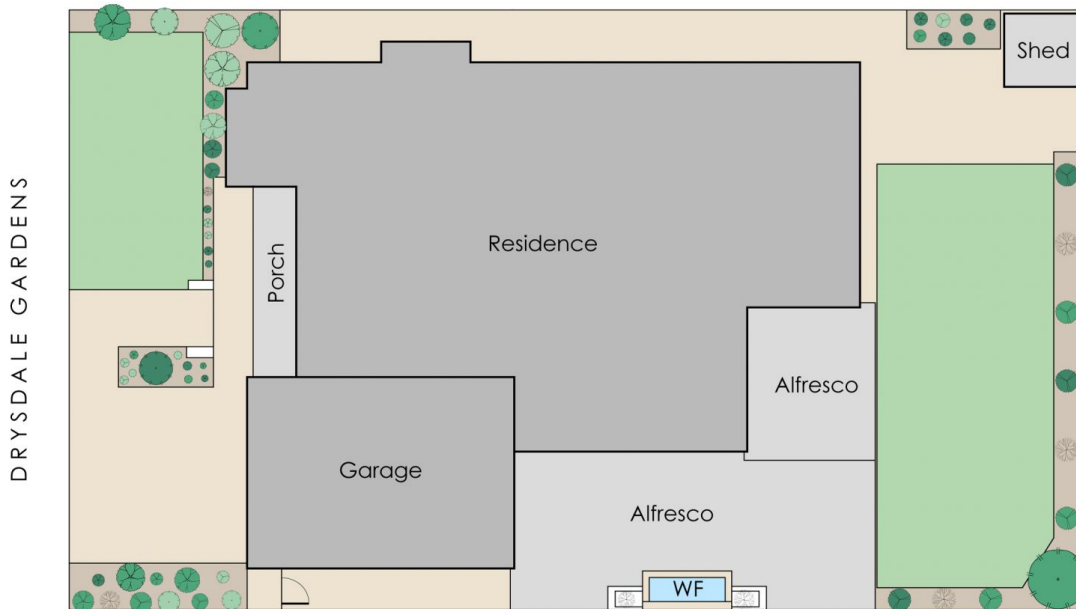
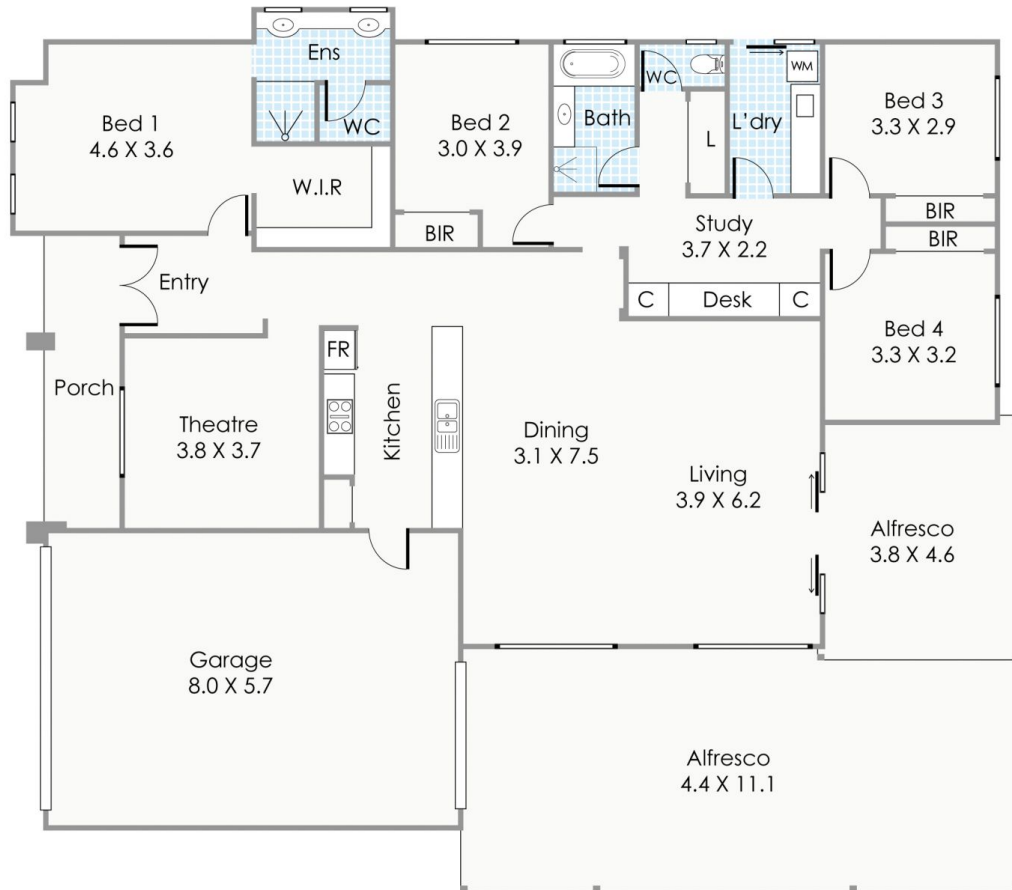
With a HUGE internal floor plan of 308sqm, set on 540sqm block, expansive master suite with retreat area, three additional spacious bedrooms, study nook, home theatre room, open plan kitchen, dining and living area with extra high ceilings, not to mention the landscaped back garden

Type : House
Building Size : 308 sqm
Land Size : 540 sqm
View : <https://www.lauriekelly.com.au/sale/wa/southern-suburbs/wandi/residential/house/8019568>



Kim Findlay
 08 9277 4200

[For full version visit the website](https://www.lauriekelly.com.au)



Approximate Areas

Residence:	189m ²
Garage:	46m ²
Alfresco:	66m ²
Porch:	7m ²
Total Area:	308m ²

This floorplan is for illustration purposes only to show the layout of the property. Whilst every effort has been made to ensure the accuracy of this floor plan, all measurements, and any other information shown are an approximate interpretation only. Measurements and total areas do not include or account for wall thickness or roof area under eaves. Crib Creative will not be held liable or responsible for any error, omission, misrepresentation or use of any information shown on the final floor plan. Not to be used for any other purpose. www.cribcreative.com.au



 **6 Drysdale Gardens, Wandri**