

135 Swansea Street East Victoria Park WA

2 1 2

The great Australian dream sits here as pretty as the picture. A 1950's Brick and Tile character home sitting proudly behind a picket fence and in a super convenient cul-de-sac location that is opposite reserve parklands, local bus route and within walking distance to the delights of the East Victoria Park's cafe strip, Swansea Street Markets and the Aqualife Centre. All this on large 343sqm block with an abundance of room to move and create your forever home!

Features include, but are not limited to:

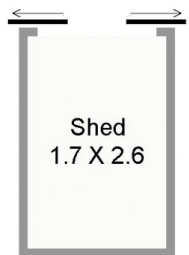
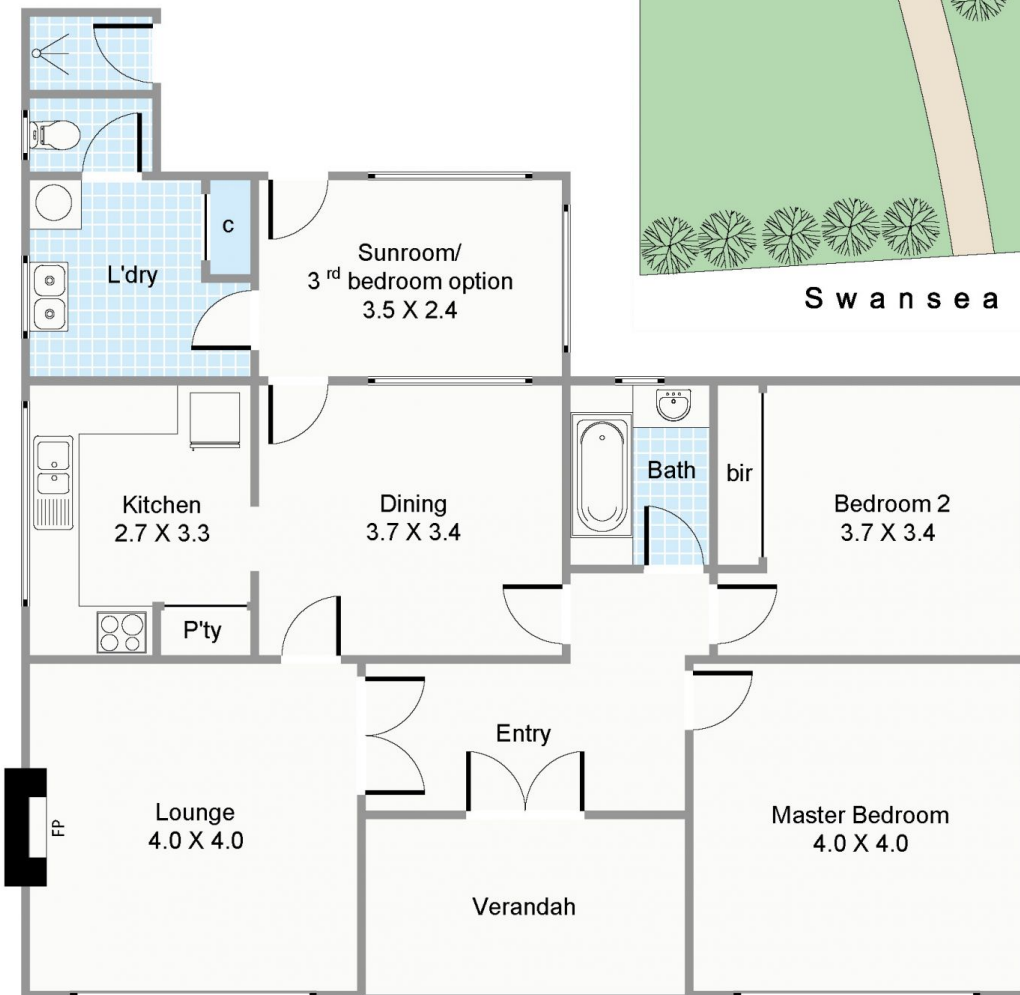
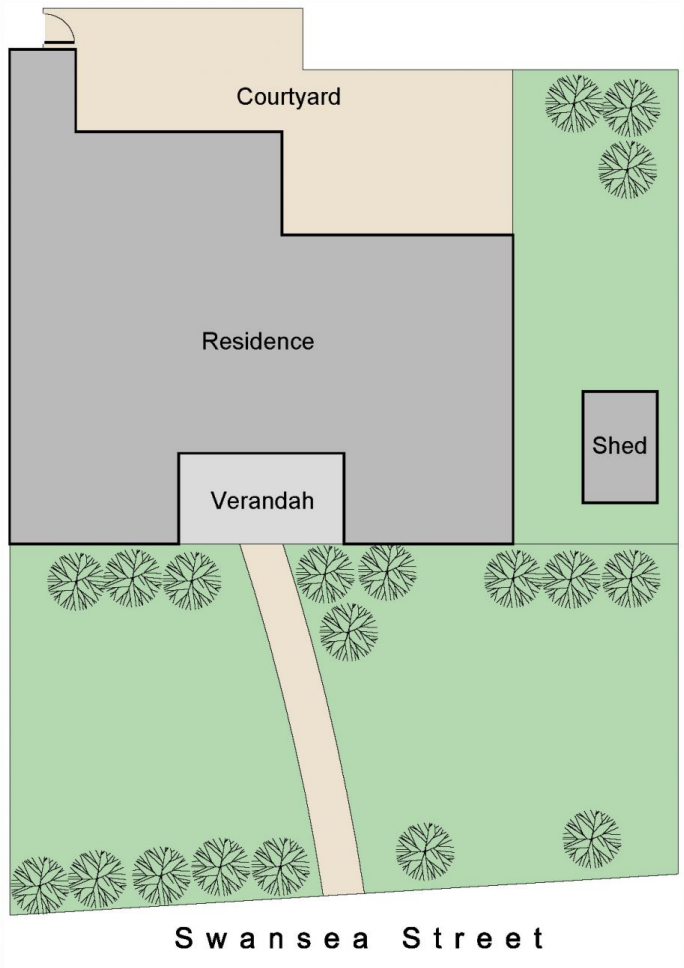
* Beautiful front porch to enjoy your morning coffee, watch the world whistle by, surrounded by beautifully maintained and established lawns and gardens

[For full version visit the website](https://www.lauriekelly.com.au)

Type : House
Building Size : 102.4 sqm
Land Size : 343 sqm
View : <https://www.lauriekelly.com.au/sale/wa/southern-suburbs/east-victoria-park/residential/house/7937588>



Kim Findlay
 08 9277 4200



Approximate Areas

- Residence: 102.4m²
- Shed: 4.9m²
- Verandah: 8.8m²
- Total Area: 116.1m²

All measurements are estimates
 All dimensions are in metres.
 Plans are for demonstration only.
www.cribcreative.com.au



**135 Swansea Street,
 East Victoria Park**