



201 Fisher Street Cloverdale WA

4 1 4

(BY APPOINTMENT - EXPRESS YOUR INTEREST TODAY)

Rarely does a property of this caliber hit the local real estate market and when it does, buyer competition is fierce. Painstakingly renovated throughout with not a cent to spend just move in and enjoy this glorious residence. Perfectly situated with walking distance to Belmont Forum, Belmont Town Centre, various schools and parklands you will be spoilt for lifestyle choices. My owner's instructions are very clear this outstanding property will be SOLD so don't delay get in touch with us today.

RED HOT FEATURES INCLUDE

[For full version visit the website](https://www.lauriekelly.com.au)

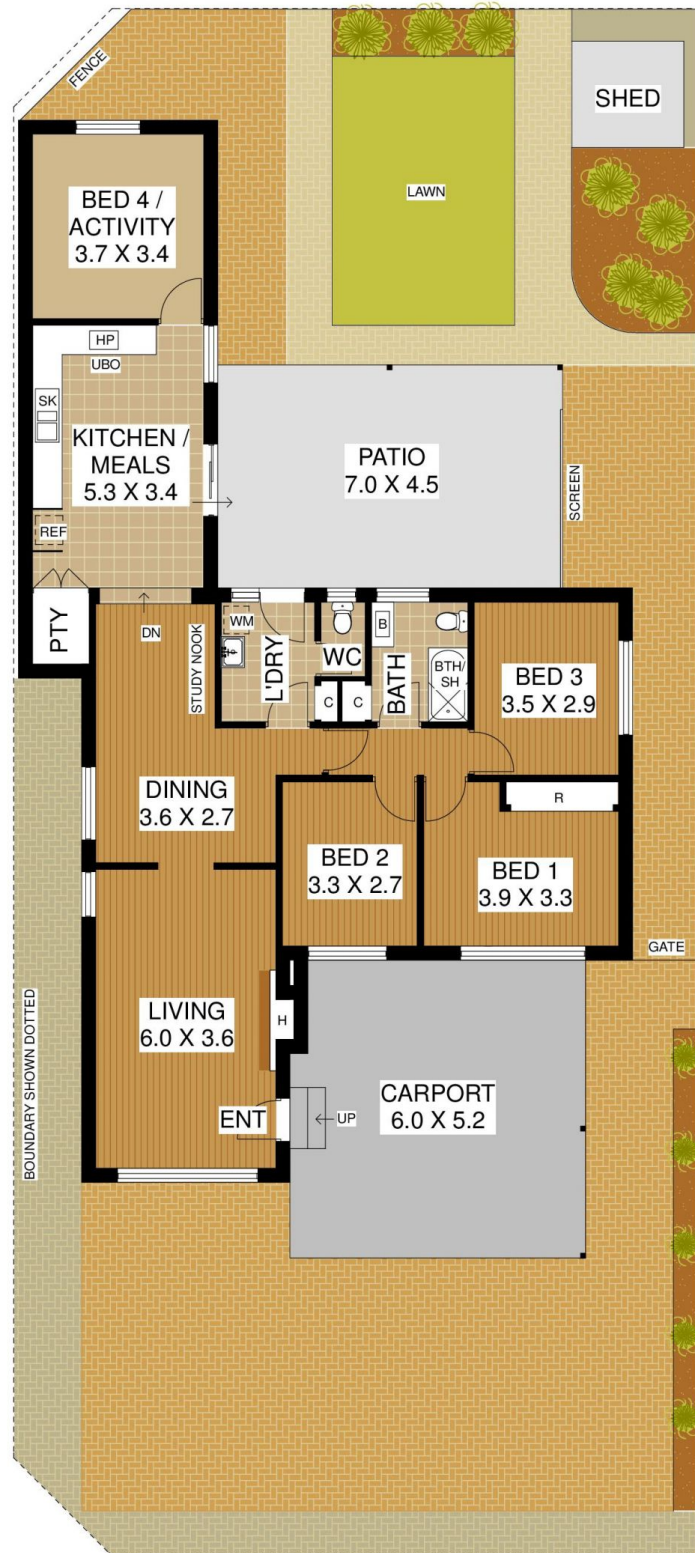
Type : House
Building Size : 198 sqm
Land Size : 435 sqm
View : <https://www.lauriekelly.com.au/sale/wa/southern-suburbs/cloverdale/residential/house/7936542>



Devon Kelly
08 9277 4200



Daniel Kelly
08 9277 4200



201 Fisher Street, Cloverdale



PLAN IS APPROXIMATE AND REPRESENTATIONAL ONLY

WWW.TATEFLOORPLANS.COM.AU