



## 62a Kahana Parkway Butler WA

3 2 2

From the moment you arrive this home stands out! With gorgeous street appeal coupled with a free flowing floorplan, your relaxed lifestyle awaits.

Features include:

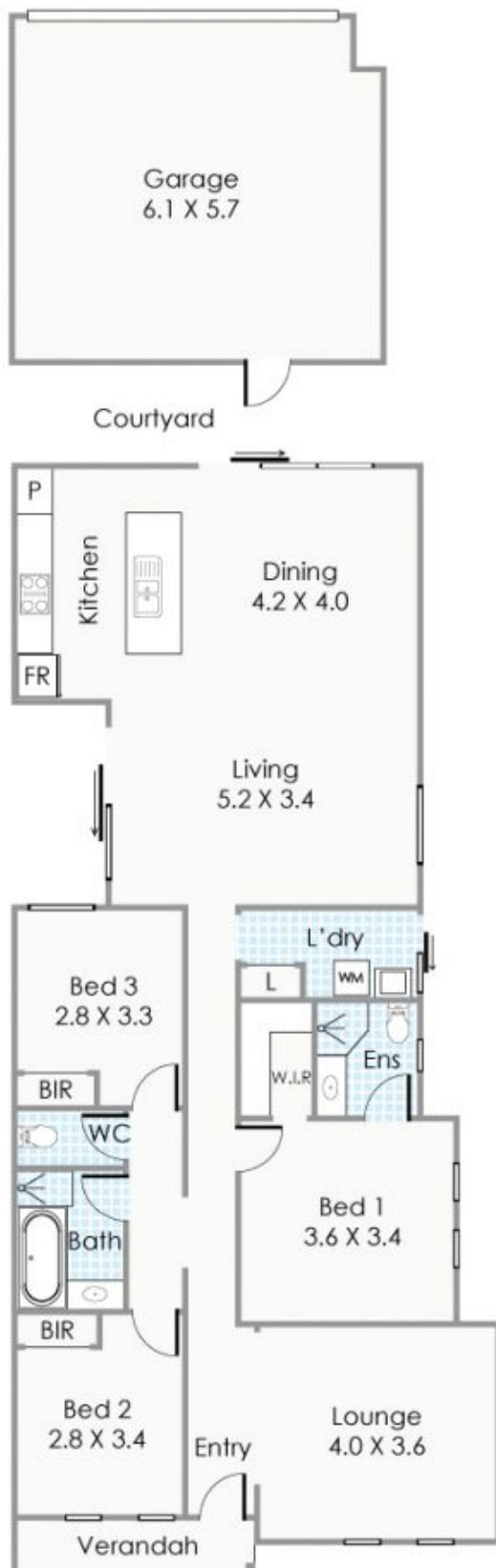
- \* Built in 2008
- \* 3 bedroom (all with built in robes) x 2 bathrooms
- \* Front verandah
- \* Tiled entry foyer
- \* Formal lounge room
- \* Large light filled kitchen/dining/family room fully tiled and air-conditioned
- \* Stylish kitchen with loads of cupboards and an abundance of bench space. A huge double door pantry,

[For full version visit the website](https://www.lauriekelly.com.au)

**Type** : Semi Detached  
**Building Size** : 141 sqm  
**Land Size** : 275 sqm  
**View** : <https://www.lauriekelly.com.au/sale/wa/northern-suburbs/butler/residential/semi-detached/7936530>



**Kim Findlay**  
08 9277 4200



KAHANA PARKWAY

Site Area: 275m<sup>2</sup>

#### Approximate Areas

Residence:	141m <sup>2</sup>
Garage:	37m <sup>2</sup>
Verandah:	3m <sup>2</sup>
<b>Total Area:</b>	<b>181m<sup>2</sup></b>

This floorplan is for illustration purposes only to show the layout of the property. Whilst every effort has been made to ensure the accuracy of this floor plan, all measurements, and any other information shown are an approximate interpretation only. Measurements and total areas do not include or account for wall thickness or roof area under eaves. Ciba Creative will not be held liable or responsible for any error, omission, misrepresentation or use of any information shown on the final floor plan. Not to be used for any other purpose. [www.cibacreative.com.au](http://www.cibacreative.com.au)



**62A Kahana Parkway, Butler**