



112 Gabriel Street Cloverdale WA

3 2 4

Low maintenance Parkside/forum side home awaits, with multiple living areas, spacious bedrooms, a modern kitchen, and bathroom; bring the bags and start living the life in this stunning central location!

This original 1980's build has undergone a full renovation completed in 2017, leaving this home immaculately finished. You are within walking distance of the Belmont Forum and entertainment precinct, Forster Park, and Faulkner Park, not to mention easy access to the freeways, airport, Optus Stadium, Crown Casino, and Swan River.

Features included but are not limited to:

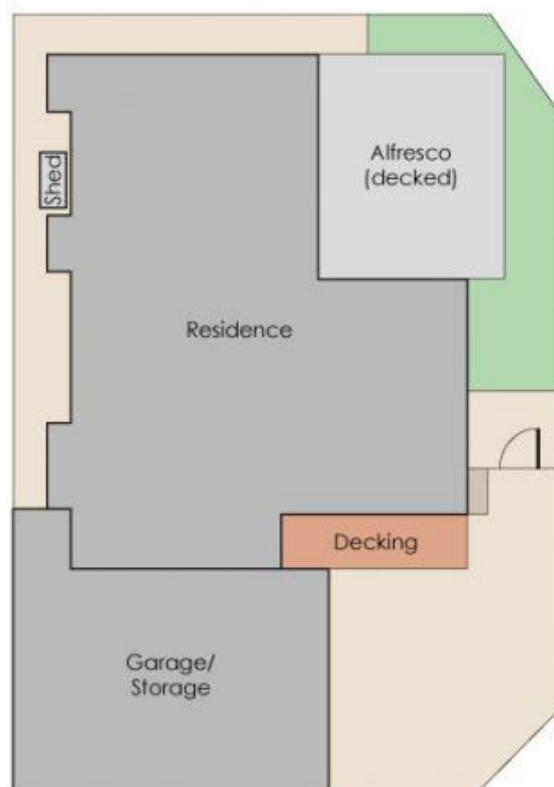
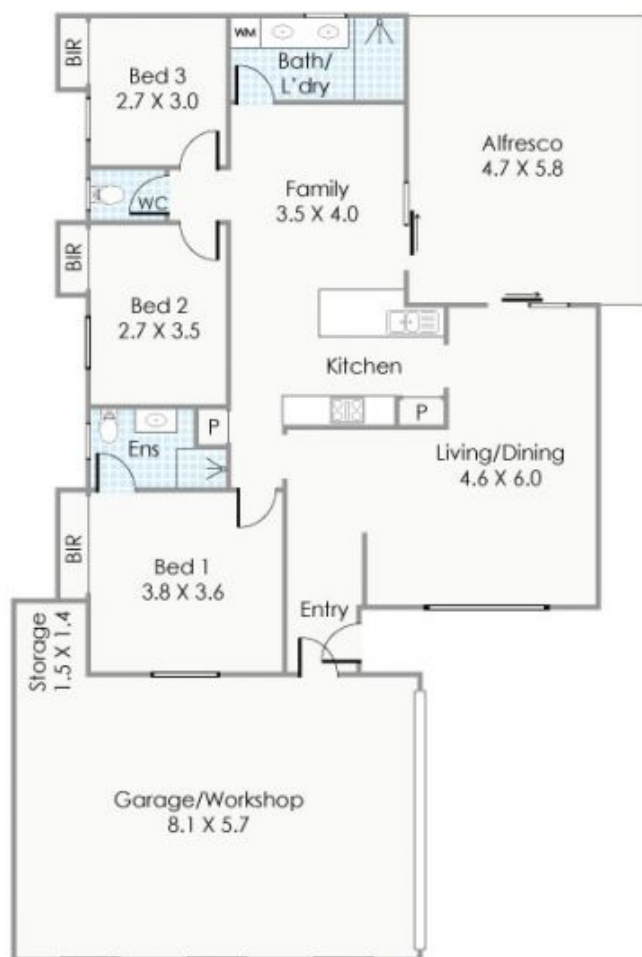
? Front formal lounge area with room for the kids to set up an activity area or perfect home office. The space is filled

[For full version visit the website](https://www.lauriekelly.com.au)

Type : House
Building Size : 135 sqm
Land Size : 343 sqm
View : <https://www.lauriekelly.com.au/sale/wa/southern-suburbs/cloverdale/residential/house/7936520>



Kim Findlay
08 9277 4200



GABRIEL STREET
 Total Strata Lot: 343m²

Approximate Areas

Residence:	108m ²
Garage:	46m ²
Storage:	2m ²
Alfresco:	27m ²
Total Area:	183m²

This floorplan is for illustration purposes only to show the layout of the property. Whilst every effort has been made to ensure the accuracy of this floor plan, all measurements, and any other information shown are an approximate interpretation only. Measurements and total areas do not include or account for wall thickness or roof area under eaves. Ciba Creative will not be held liable or responsible for any error, omission, misrepresentation or use of any information shown on the first floor plan. Not to be used for any other purpose.
www.cibacreative.com.au



112 Gabriel Street, Cloverdale