



**23a Paltridge Avenue Carlisle WA**

3 1 3

Location, location, location is what you will get with this generous three bed duplex/home boasting 108sqm of actual living space. Nestled in one of Carlisle's most sought-after tree lined streets set right on the border of high growth Lathlain you can't go wrong with this pearler. The established block totals 383sqm with space for three vehicles including lock garage and spacious paved rear oasis offering huge alfresco patio. With easy access to the Victoria Park café strip, Burswood Casino, Optus Stadium, and the Perth CBD you will be spoilt for lifestyle choices. If you like what you see be quick as this location is too hot to handle and will not last long.

**Type** : Semi Detached  
**Building Size** : 108 sqm  
**Land Size** : 383 sqm  
**View** : <https://www.lauriekelly.com.au/sale/wa/southern-suburbs/carlisle/residential/semi-detached/7929221>

**KEY FEATURES INCLUDE**

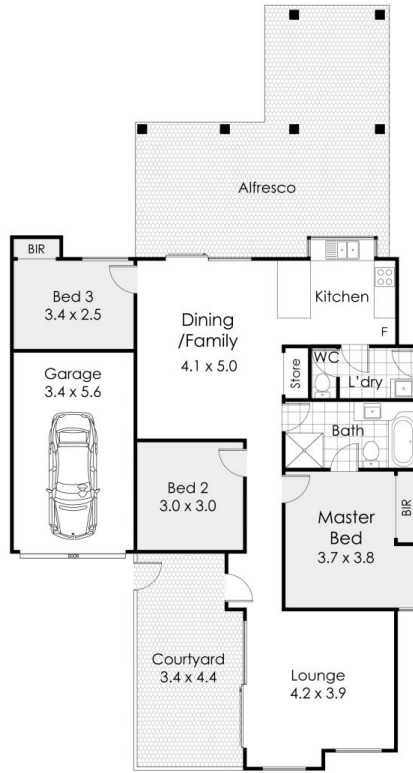
[For full version visit the website](#)



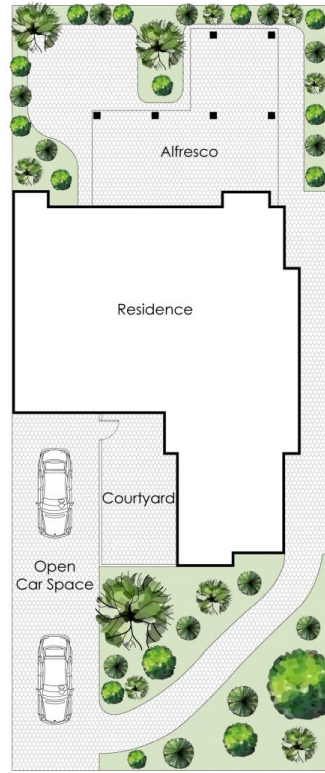
**Devon Kelly**  
 08 9277 4200



**Daniel Kelly**  
 08 9277 4200



GROUND FLOOR



SITE PLAN



## 23a Paltridge Avenue, Carlisle

This floor plan is not to scale.  
 Dimensions are approximate and therefore should only be used for illustrative purposes.

-  383 m<sup>2</sup>
-  3 Bed
-  1 Bath
-  3 Car