



45 Whiteside Street Cloverdale WA

4 1 3

Be very quick for this ultimate first homebuyers/family package ready for your own personal touches. Situated in quiet tree lined street with modern estate directly across the road this is the perfect place to start your real estate journey. Over the last 40 years the property has been lovingly renovated and extended giving the lucky new buyer plenty of extra value to enjoy. Don't delay contact us today to arrange a private inspection of this well priced property before it's too late.

Land Size : 756 sqm
View : <https://www.lauriekelly.com.au/sale/wa/south-hern-suburbs/cloverdale/residential/house/7929212>

KEY FEATURES INCLUDE

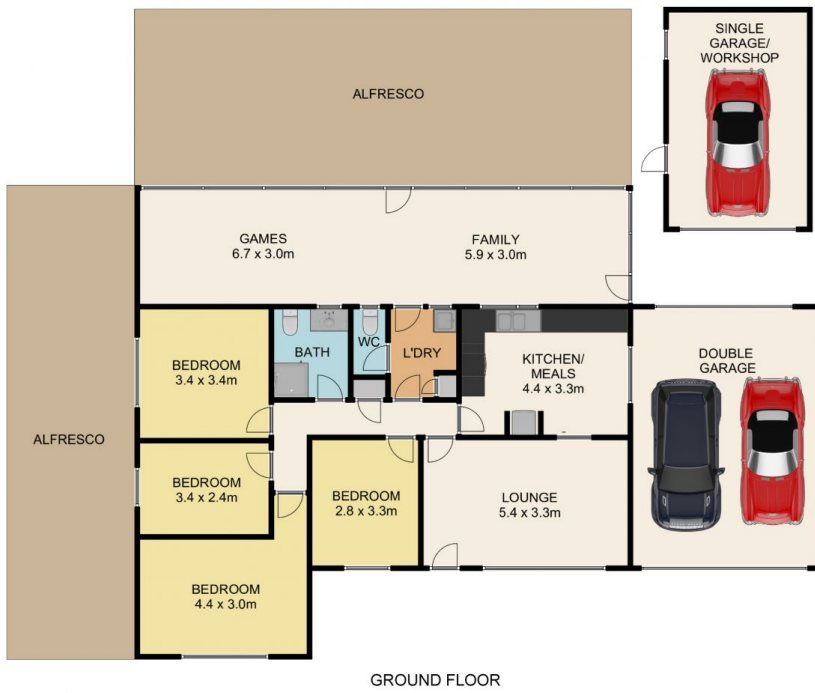
- ? Solid brick & tile construction with feature render.
- ? Covered front entrance porch leads into the home.
- ? Separate lounge room & country style kitchen/meals.
- ? Stunning granite benchtop plus plenty of cupboards.
- ? Stainless steel upright stove/oven plus double sink.



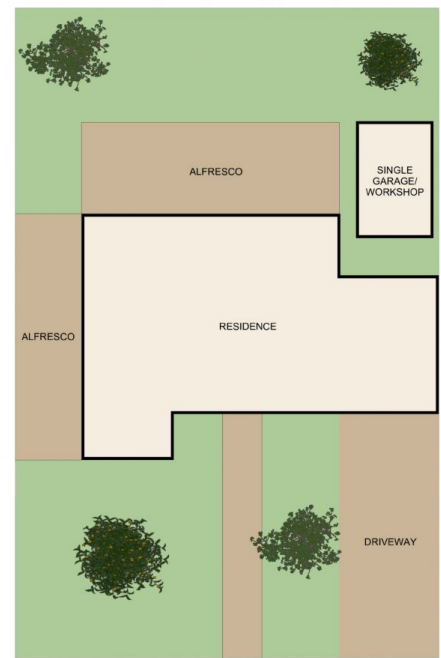
Devon Kelly
 08 9277 4200



Daniel Kelly
 08 9277 4200



GROUND FLOOR



SITE PLAN



45 Whiteside Street, Cloverdale

This floor plan is not to scale.
Dimensions are approximate and therefore should only be used for illustrative purposes.

Land: 756sqm
Internal: 173sqm
 4 Bed
 1 Bath