



17 Pontiac Avenue Cloverdale WA

3 1 4

You get a red-hot location combined with endless development options when you secure this outstanding real estate opportunity. Offering heaps of available choices you could continue to renovate the home, lease the property out for top dollar or demolish and develop straight away. Existing brick and tile character home built in 1961 is in good condition and comes freshly painted internally with beautiful timber board ready for polishing. Plenty of side access into the back yard with a carport and older style garage/workshop at the rear. With Forster Park at the end of the street and Belmont Forum walking distance you can't go wrong with this little beauty.

Type : House
Land Size : 794 sqm
View : <https://www.lauriekelly.com.au/sale/wa/southern-suburbs/cloverdale/residential/house/7929210>

KEY FEATURES INCLUDE

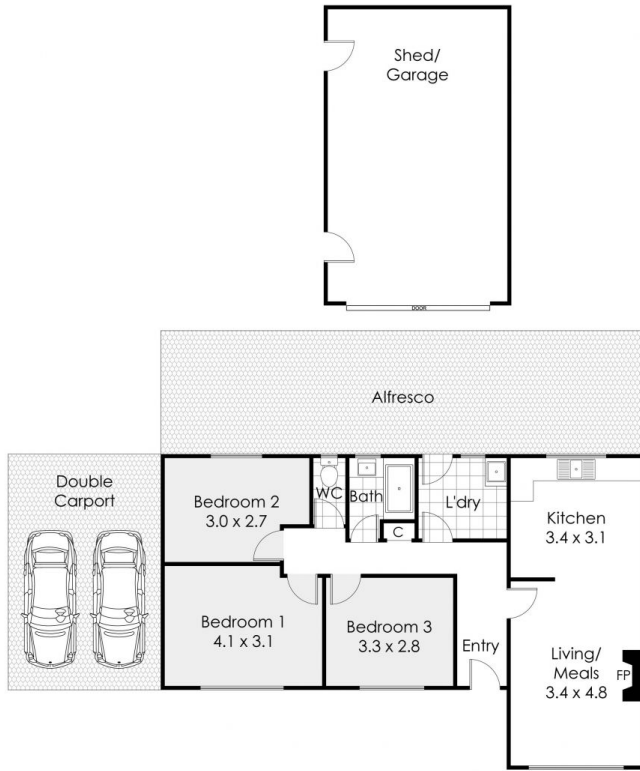
[For full version visit the website](#)



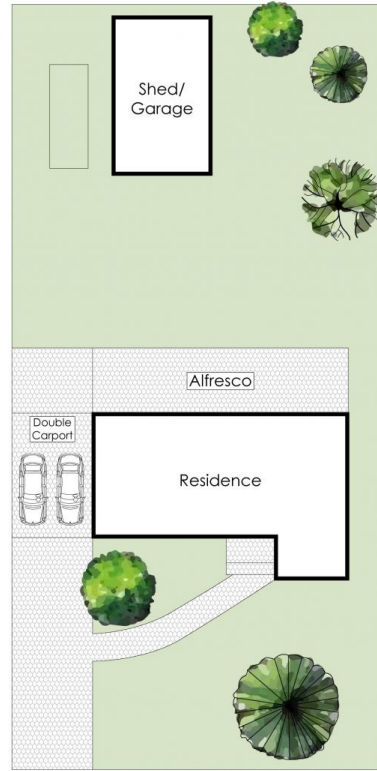
Devon Kelly
 08 9277 4200



Daniel Kelly
 08 9277 4200



GROUND FLOOR



SITE PLAN

17 Pontiac Avenue, Cloverdale

This floor plan is not to scale.
Dimensions are approximate and therefore should only be used for illustrative purposes.

	794 m ²
	3 Bed
	1 Bath
	2 Car