



**1/83 Epsom Avenue Redcliffe WA**

**3** **1** **2**

Enter this unique buying opportunity highly suited to those who love to entertain and enjoy the flexibility of nearby Swan River and airport living - welcome home to 1/83 Epsom Avenue, Redcliffe.

A secure 3-bedroom modern villa that feels much more like a home, with 2 massive courtyards you will have plenty of room for all your friends when they drop in, or storage for your toys. Beautifully maintained since new you will relish the modern kitchen and bathroom.

Features and benefits include:

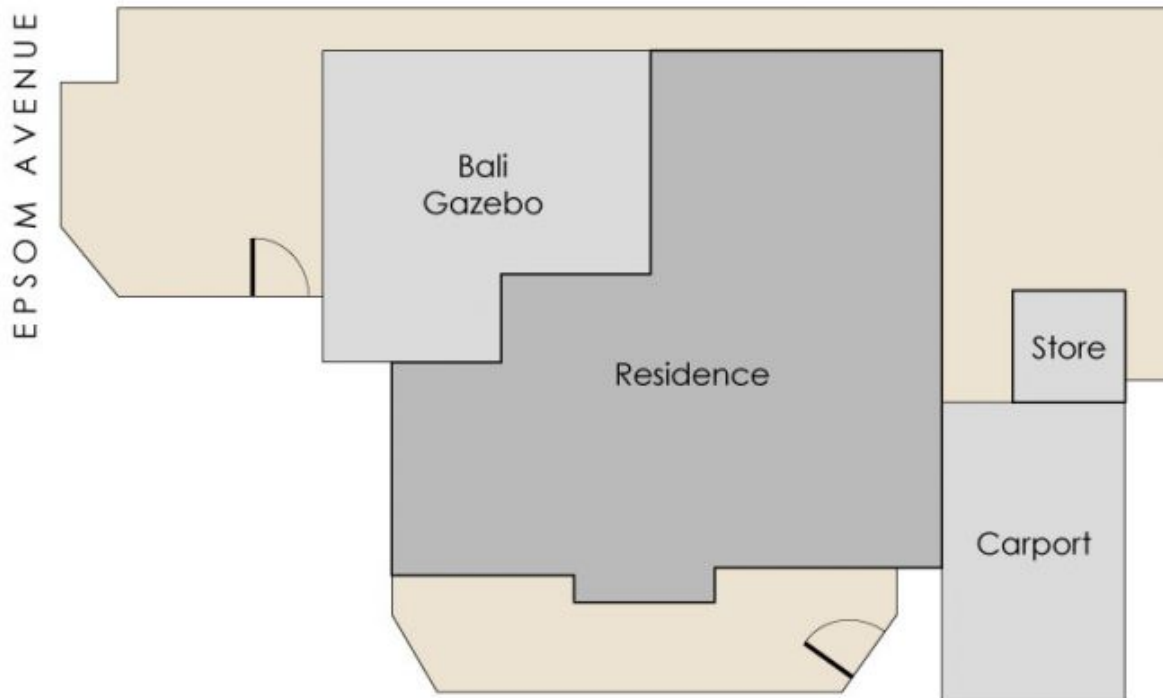
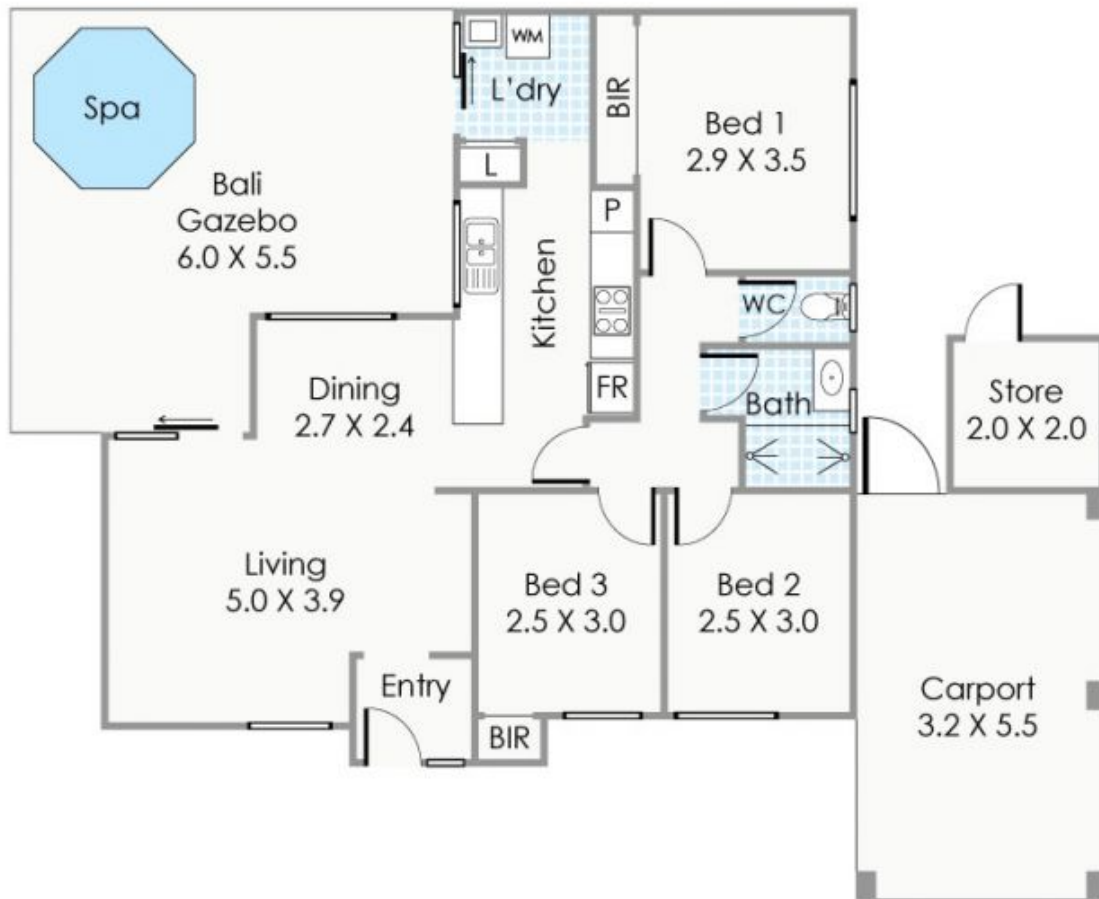
? Large open plan living/meals area opening directly onto outdoor alfresco area with split system air-conditioning and

[For full version visit the website](https://www.lauriekelly.com.au)

**Type** : Villa  
**View** : <https://www.lauriekelly.com.au/sale/wa/eastern-suburbs/redcliffe/residential/villa/7534319>



**Kim Findlay**  
**08 9277 4200**



Total Strata Lot: 98m<sup>2</sup>

Approximate Areas

Residence:	77m <sup>2</sup>
Carport:	17m <sup>2</sup>
Store:	4m <sup>2</sup>
<b>Total Area:</b>	<b>98m<sup>2</sup></b>

This floorplan is for illustration purposes only to show the layout of the property. While every effort has been made to ensure the accuracy of this floor plan, all measurements, and any other information shown are an approximate interpretation only. Measurements and total areas do not include or account for wall thickness or roof area under eaves. CIB Creative will not be held liable or responsible for any error, omission, misrepresentation or use of any information shown on the final floor plan. Not to be used for any other purpose. [www.cibcreative.com.au](http://www.cibcreative.com.au)



Unit 1, 83 Epsom Avenue, Redcliffe