

**6/214 Wharf Street Queens Park WA**

3 🏠 2 🚗 2 🚗

A UNIQUE LAND HOLDING OFFERED FOR GENUINE SALE BY OVERSEAS OWNER. This rear and vacant 1832sqm block has council approval for 8 townhouses (1696sqm) + 2015 built 3 bedroom x 2 bathroom villa.

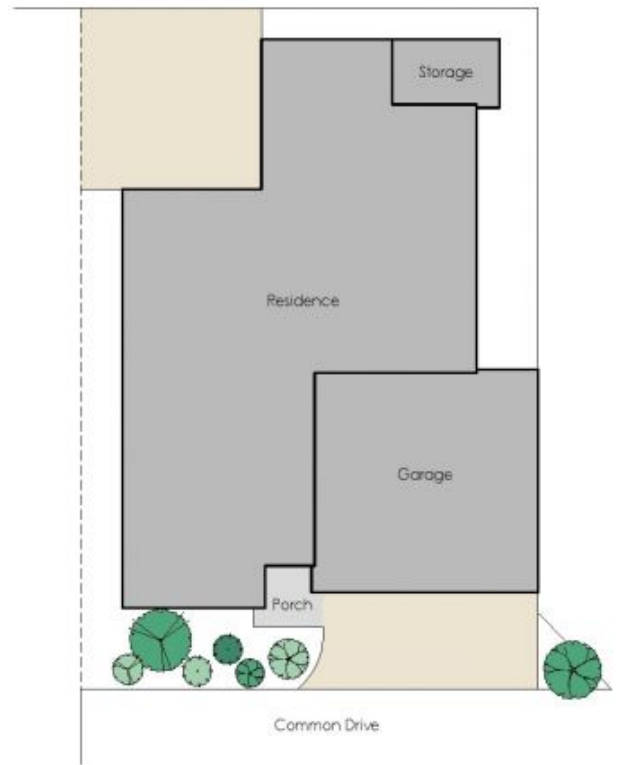
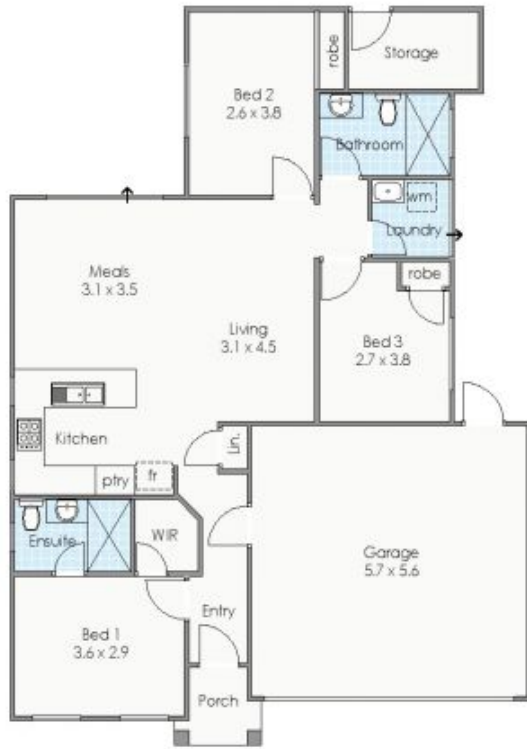
- \* 1832sqm in total which includes a rear and vacant 1696sqm council approved 8 unit site
- \* Approved plans to build eight (8) 3-bedroom, 2-bathroom, 2-car garage townhouses ready to go
- \* Apart of a second staged development at the rear of a 10 unit single storey development - development to approved to use existing driveway.
- \* 2015 built 3 bedroom x 2 bathroom x 2 car garage villa rented at \$390pw periodically
- \* Walking distance to Queens Park train station

**Type** : House  
**Building Size** : 95 sqm  
**Land Size** : 1832 sqm  
**View** : <https://www.lauriekelly.com.au/sale/wa/southern-suburbs/queens-park/residential/house/7503239>



**Kim Findlay**  
 08 9277 4200

[For full version visit the website](https://www.lauriekelly.com.au)



Approximate Areas

Residence:	95m <sup>2</sup>
Garage:	34m <sup>2</sup>
Porch:	2m <sup>2</sup>
Storage:	5m <sup>2</sup>

Total area:	136m <sup>2</sup>
Site area:	1696m <sup>2</sup>

These plans have been produced for marketing purposes and are approximate only. They are not suitable for other uses.  
[www.ctbcreative.com.au](http://www.ctbcreative.com.au)



6/214 Wharf Street Queens Park

