



3 Lemon Gum Court Kewdale WA

3 2 4

(BLINK AND YOU WILL MISS IT)

Perfectly positioned in a whisper quiet cul-de-sac between Tomato Lake and the Belmont Forum is this beautiful federation style stunner. Boasting traditional red double brick walls, terracotta clay tile roof, heritage green features and front fencing offering an abundance of character. The spacious open plan living area offers plenty of options to furnish in your own style with the huge kitchen the centre piece of the family hub. Green reticulated frangipani gardens and the lush front lawn have been meticulously maintained and manicured and are credit to the current owner. This beautifully maintained property is an absolute pleasure to offer for sale with the lucky buyer not only getting the home but an idyllic lifestyle choice only 10

Type : House
Building Size : 209 sqm
Land Size : 423 sqm
View : <https://www.lauriekelly.com.au/sale/wa/southern-suburbs/kewdale/residential/house/7471602>

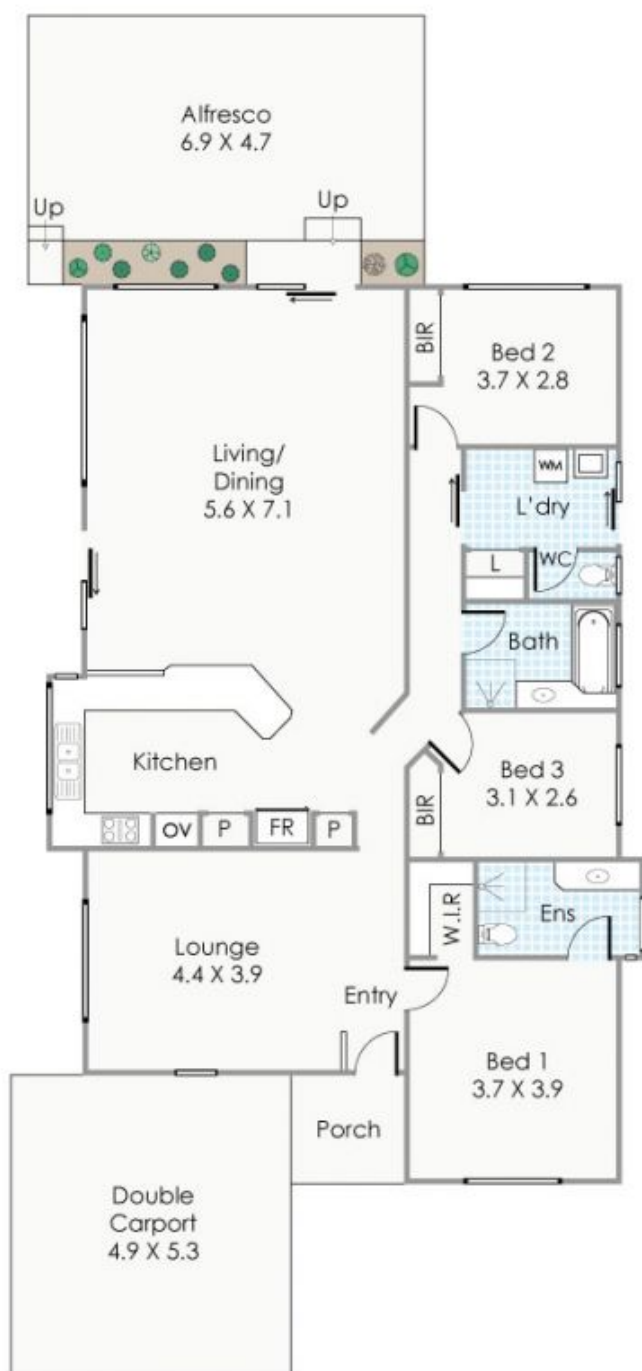


Devon Kelly
08 9277 4200



Daniel Kelly
08 9277 4200

[For full version visit the website](https://www.lauriekelly.com.au)



LEMON GUM COURT

Approximate Areas

House:	147m ²
Porch:	4m ²
Carport:	26m ²
Alfresco:	32m ²

Total :	209m ²
Block:	423m ²

This floorplan is for illustration purposes only to show the layout of the property. Whilst every effort has been made to ensure the accuracy of this floor plan, all measurements, and any other information shown are an approximate interpretation only. Measurements and total areas do not include or account for wall thickness or roof area under eaves. Ciba Creative will not be held liable or responsible for any error, omission, misrepresentation or use of any information shown on the final floor plan. Not to be used for any other purpose.
www.cibacreative.com.au



3 Lemon Gum Court, Kewdale