



6/32 Victoria Street Redcliffe WA

2 1 1

(VACANT POSSESSION AVAILABLE RIGHT NOW)

Situated in the sought-after Redcliffe TOP END is this low maintenance street frontage home/villa in whisper quiet group. Great for the first home buyer, FIFO worker or small change investor offering easy access to the new Redcliffe Train Station and Perth Airport. My owners, instructions are very clear he wants offers on this property asap so be quick to act on this one before it gets away.

KEY FEATURES INCLUDE

- ? Solid double brick & tile 1977 construction.
- ? Own under cover carport and lock up store.
- ? Separate lounge room with rev split aircon.

[For full version visit the website](https://www.lauriekelly.com.au)

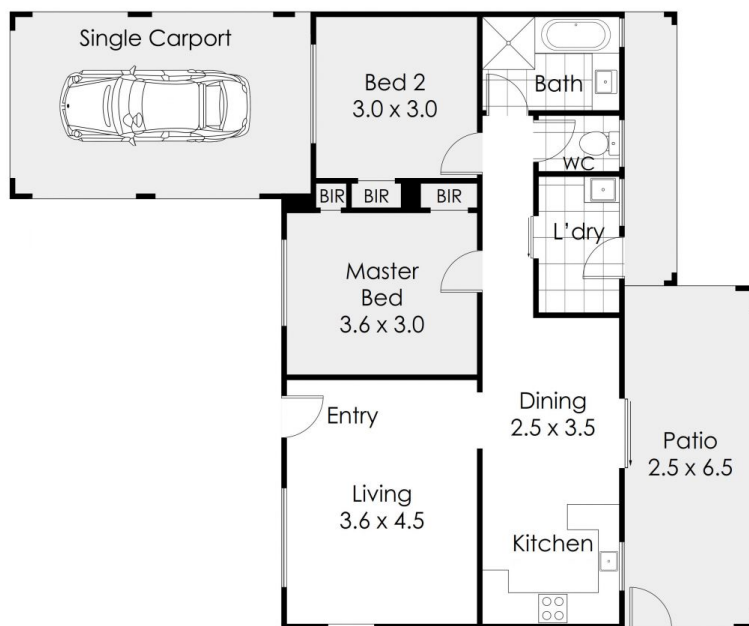
Type : Villa
Building Size : 76 sqm
View : <https://www.lauriekelly.com.au/sale/wa/eastern-suburbs/redcliffe/residential/villa/7381304>



Devon Kelly
 08 9277 4200



Daniel Kelly
 08 9277 4200



6/32 Victoria Street, Redcliffe

This floor plan is not to scale.
 Dimensions are approximate and therefore should only be used for illustrative purposes.

-  157 m²
-  2 Bed
-  1 Bath
-  1 Car