



315 Orrong Road Kewdale WA

5 1 12

SLASHED 150,000K TO SELL QUICKLY!

Big block hunters and character lovers roll up for this totally unique opportunity rarely available to the market. Boasts rambling "Circa 1945" double brick & tile character homestead in great condition with plenty of accommodation and "Olde World" features. Rectangular shaped block totalling 1588sqm with a wide 23.46mt frontage and zoned R20/60 with heaps of development potential and a sky-high rent potential of \$500-\$600pw. Perfect for the character lover who will bring this old lady back to its former glory life and enjoy a rural life\$style only 5/10mins to the CBD. Express your interest today to avoid disappointment.

KEY FEATURES INCLUDE

[For full version visit the website](https://www.lauriekelly.com.au)

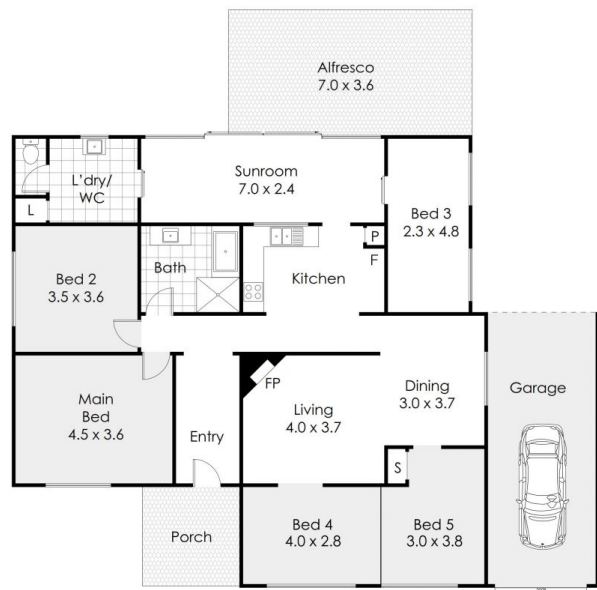
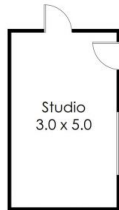
Type : House
Land Size : 1588 sqm
View : <https://www.lauriekelly.com.au/sale/wa/southern-suburbs/kewdale/residential/house/7378952>



Devon Kelly
08 9277 4200



Daniel Kelly
08 9277 4200



315 Orrong Rd, Kewdale

This floor plan is not to scale.
Dimensions are approximate and therefore should only be used for illustrative purposes.

	1588 m²
	5 Bed
	1 Bath
	2 Car