



**13 Arlunya Avenue Belmont WA**

3 1 8

Move quick on this unique three bed Skyline home set in prime position just perfect for the first homebuyer, astute investor, or FIFO worker. Situated on a lush 792sqm bore/retic block with a wide 24.14mt street frontage it is just oozing potential with plenty of side access to the rear. Super central location only a short walking distance to schools, parklands, shopping, and the Belmont town centre amenities how can you go wrong. My owners want all offers on the table so be quick to secure your slice of Belmont today.

**Type** : House  
**Land Size** : 792 sqm  
**View** : <https://www.lauriekelly.com.au/sale/wa/east-ern-suburbs/belmont/residential/house/7374994>

**RED HOT FEATURES INCLUDE**

- ? Spacious 792sqm bore/retic block zoned R20
- ? Wide 24.14mt front with heaps of side access.

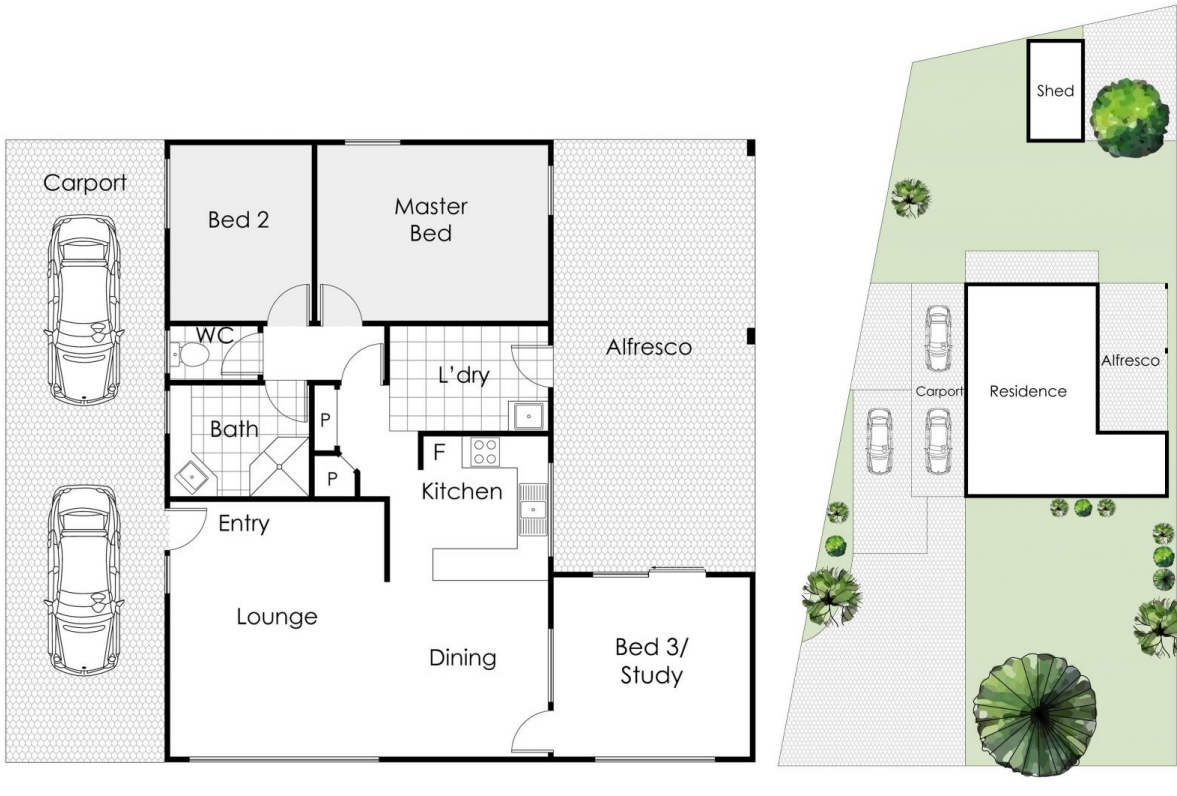
[For full version visit the website](https://www.lauriekelly.com.au)



**Devon Kelly**  
08 9277 4200



**Daniel Kelly**  
08 9277 4200



## 13 Arlunya Avenue, Belmont

This floor plan is not to scale.  
Dimensions are approximate and therefore should only be used for illustrative purposes.

-  Land: 791m<sup>2</sup>
-  3 Bed
-  1 Bath